

# The DementiaECHO Project

Improving dementia care in regional and remote communities



The need for greater access to dementia care is significant, with prevalence rates of dementia in Aboriginal and Torres Strait Islander populations being one of the highest in the world.<sup>1</sup>

## The DementiaECHO Project

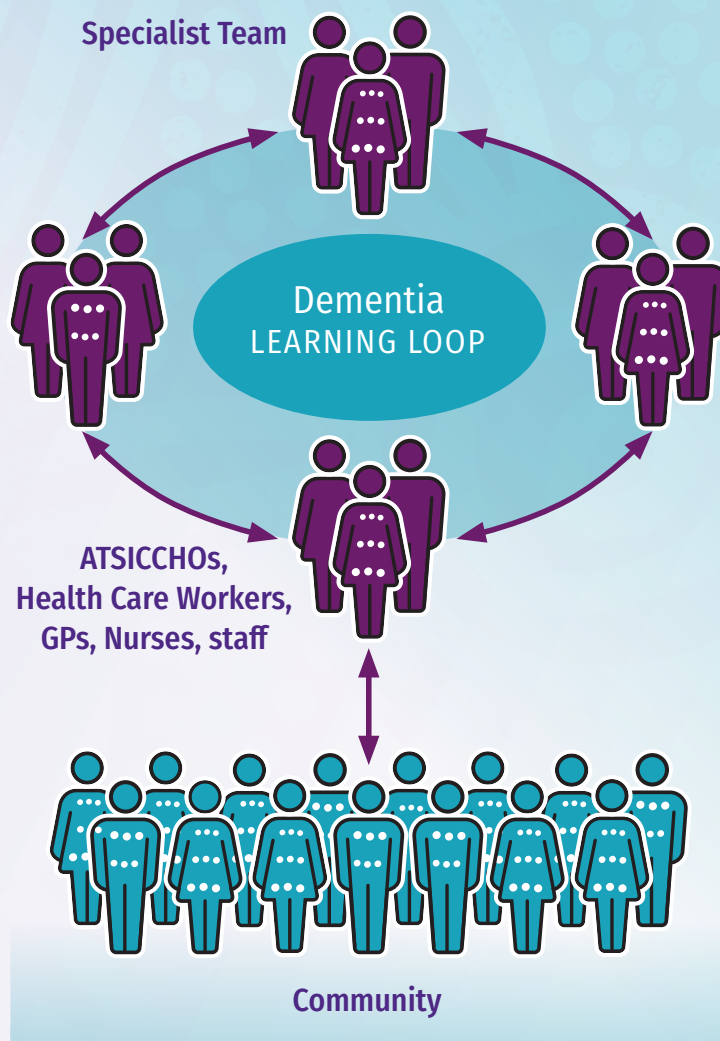
DementiaECHO aims to improve local workforce capacity and access to complex dementia. The project serves communities with limited access to specialist services by implementing place-based solutions for dementia care for Aboriginal and Torres Strait Islander people.

Aboriginal and Torres Strait Islander Health Workers, Health Care Workers, GPs, Nurses, Allied Health Workers and staff from Aboriginal and Torres Strait Islander Community Controlled Health Organisations (ATSI CCHOs) are invited to join monthly live video sessions linking services and a multi-disciplinary team of dementia specialists.

## What to expect from DementiaECHO Sessions

The monthly sessions will be held on the first Thursday of the month at 12pm. Each 45 minute session will consist of:

- a ten minute presentation (topics suggested by participants)
- a case presentation and discussion put forward by ATSI CCHO staff members
- Royal Australian College of General Practitioners (RACGP) and Australian Health Practitioner Regulation Agency (AHPRA) Continual Professional Development (CPD) points.



**Project ECHO®**  
**Moving Knowledge not People**

1. Lo Giudice D., Smith K., Fenner S., Hyde Z., Atkinson D., Skeaf L., Malay R., Flicker L. *Incidence and predictors of cognitive impairment and dementia in Aboriginal Australians: A follow-up study of 5 years.* *Alzheimers Dement.* (2016) Mar;12(3):252-61. doi: 10.1016/j.jalz.2015.01.009. Epub 2015 May 18. PMID: 25998515.

